



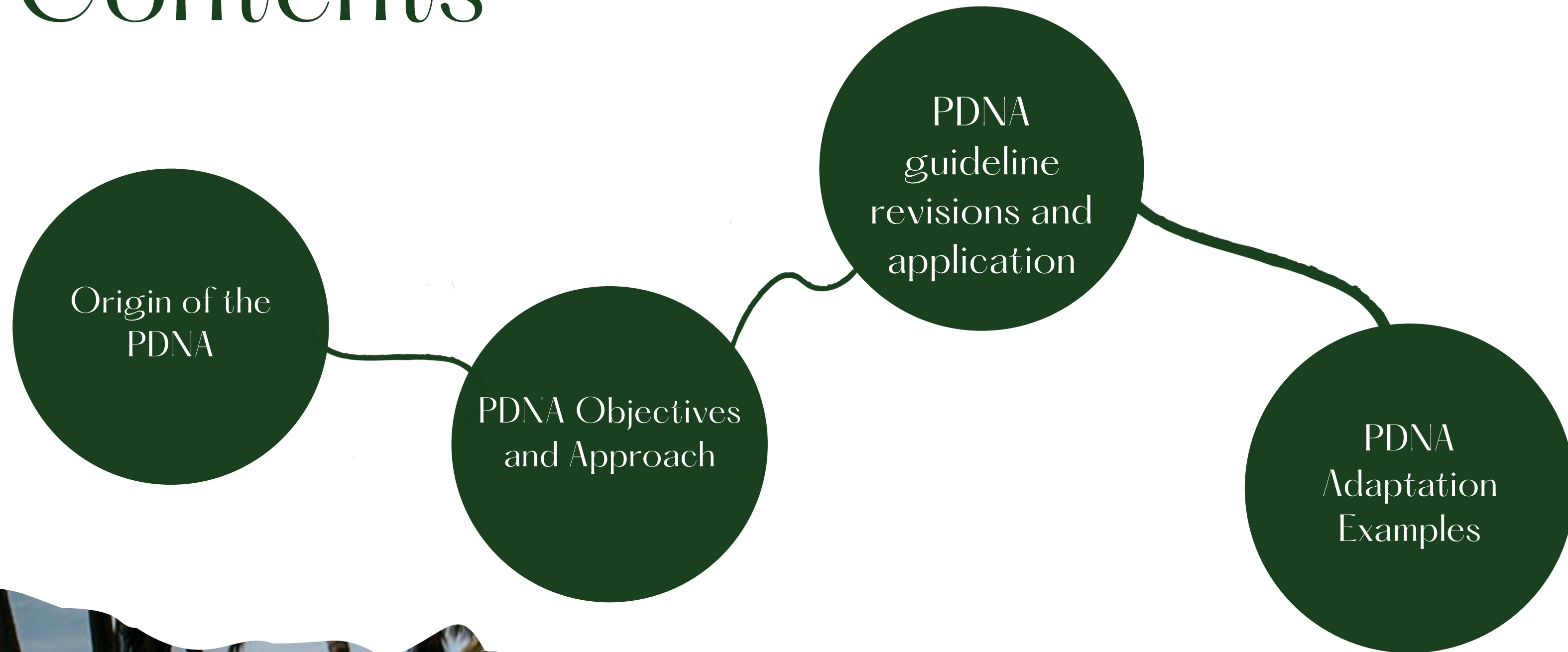
UNDP - Government of Iran

Post Disaster Needs Assessment

Rita Missal
Recovery Adviser, DRT,
UNDP, CB



Contents



What is a post-Disaster Needs Assessment?

A framework to assist governments to estimate the extent of disaster's effects and impact across all sectors and social groups in the affected areas

A basis for an actionable and sustainable recovery strategy, and financial and technical resource mobilization

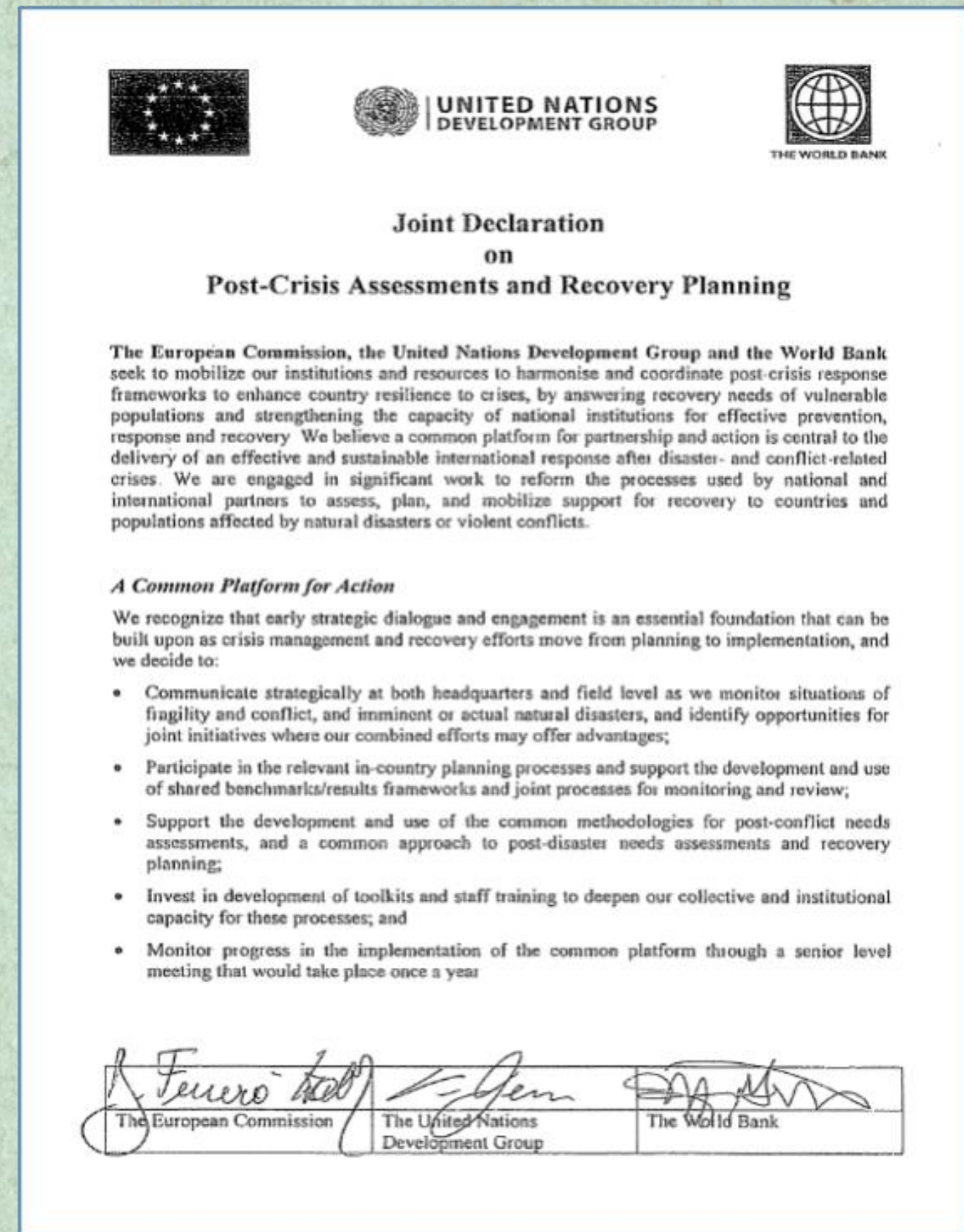


Origin of the PDNA: Post-Crisis Cooperation Agreements

Joint Declaration on Post Crisis Assessment and
Recovery planning (UNDG- World Bank and EC)
Signed 25th September 2008

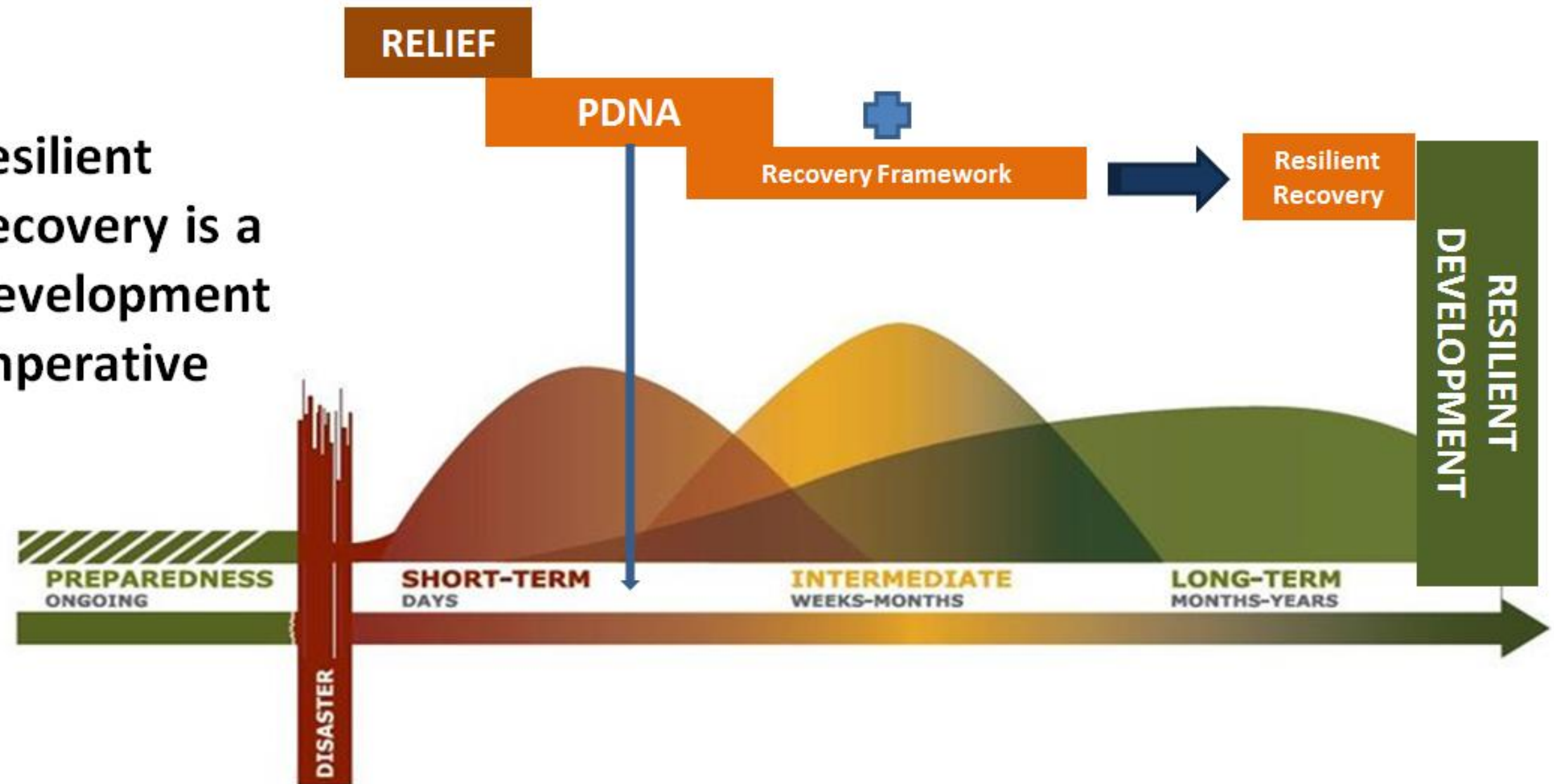
United Nations- World Bank Partnership Framework for
Crisis and Post-Crisis Situations -
Signed October 2008

United Nations Development Group- World Bank Post-
Crisis Operational Annex
- Signed 24th October 2008

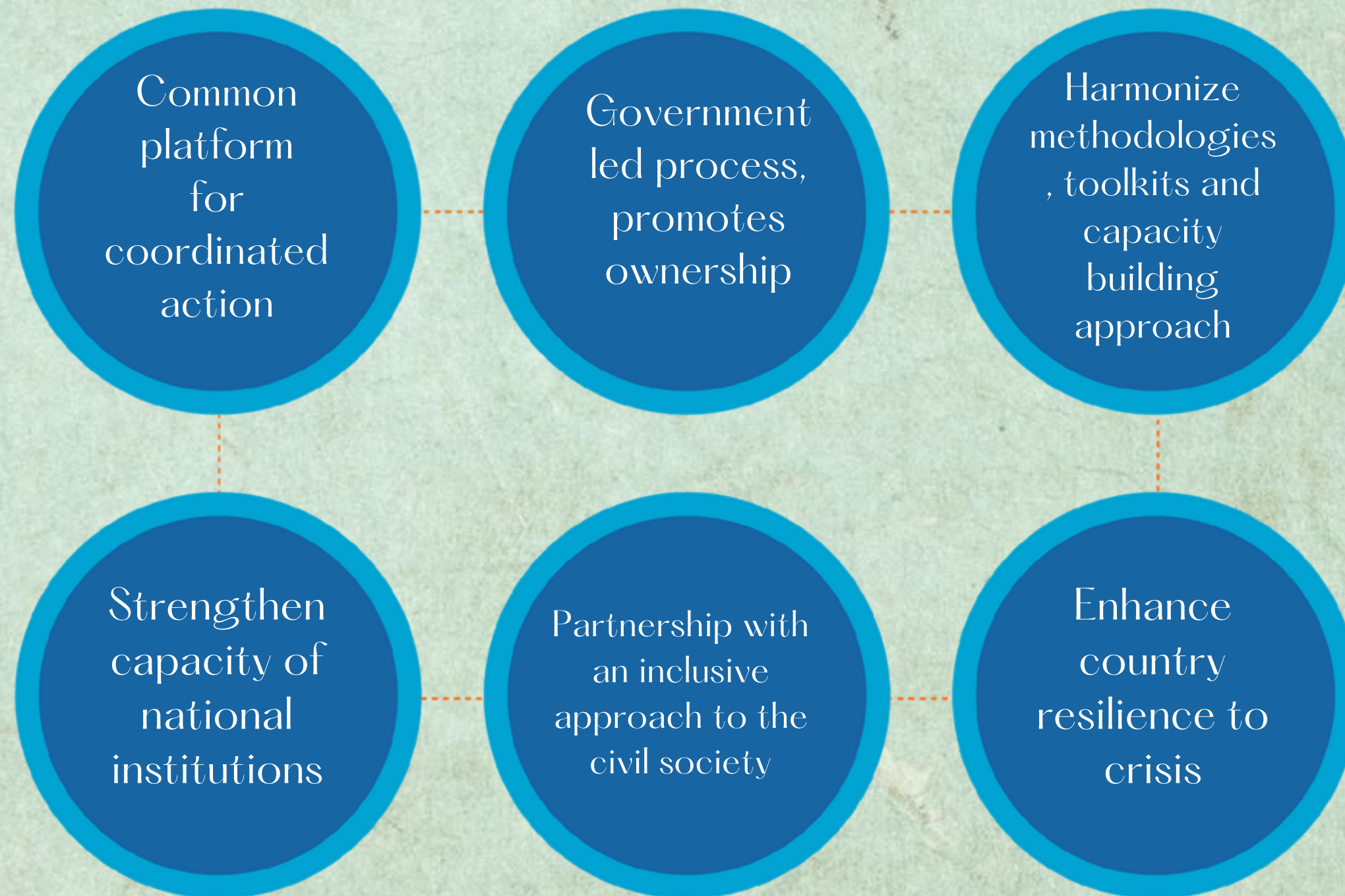


When does implementation Start?

Resilient Recovery is a Development Imperative

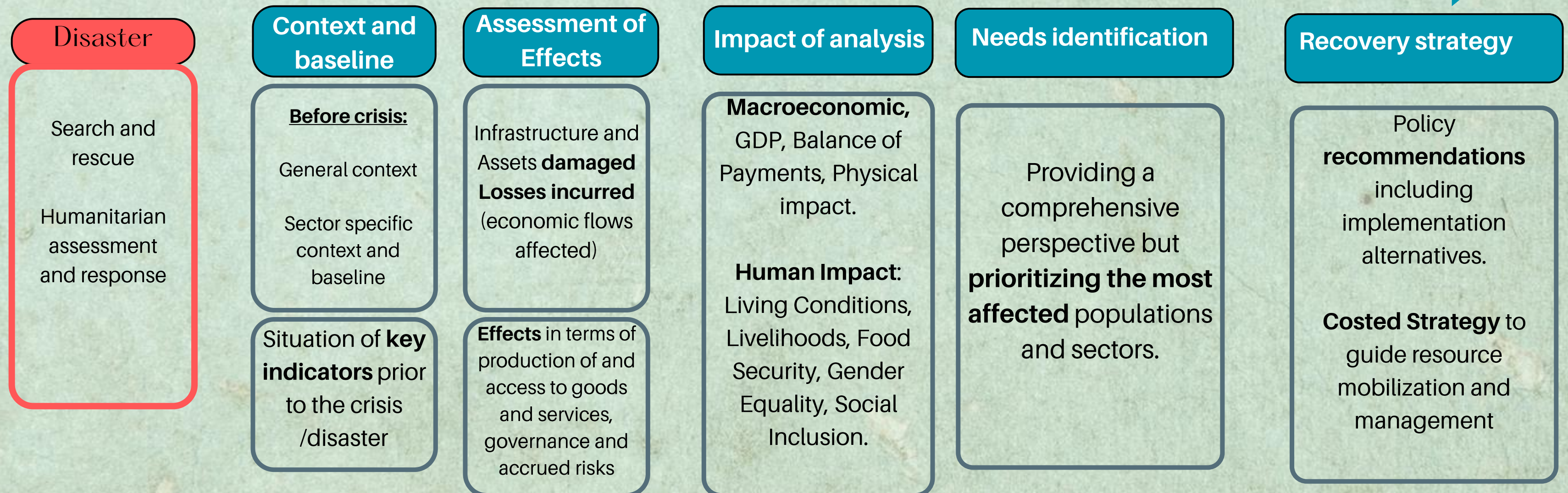


Key Elements and Principles



The PDNA Process

From Humanitarian Response to Recovery Planning



PDNA ACTORS



**National Government
and its Institutions**



**National Disaster Management
Systems, Line Ministries and
Local Governments**



**Civil society, Private
Sector, Technical and
Academic Institutions**



**EU, WB, UNDG, Regional
Development Banks and other
International Partners**

Typical Sectors and Subsectors

TYPICAL PDNA SECTORS AND CROSS-CUTTING AREAS

PRODUCTIVE

-  Agriculture
-  Commerce
-  Industry
-  Tourism





SOCIAL

-  Housing
-  Education
-  Health
-  Culture

INFRASTRUCTURE

-  Water & Sanitation
-  Community infrastructure
-  Electricity
-  Transport
-  Telecommunications

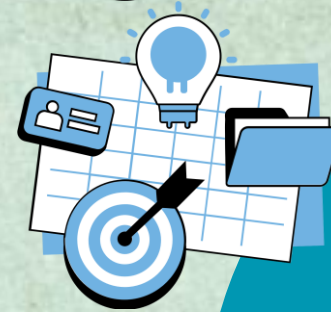
CROSS-CUTTING

-  Governance
-  Environment
-  DR
-  R Gender

PDNA Deliverables



Consolidated Assessment Report
based on sector reports that present disaster effect and impact, recovery needs, and impact on cross-cutting concerns.



Recovery Strategy
including the vision for national recovery, prioritized sector-specific recovery interventions, costs, timelines and potential actors.

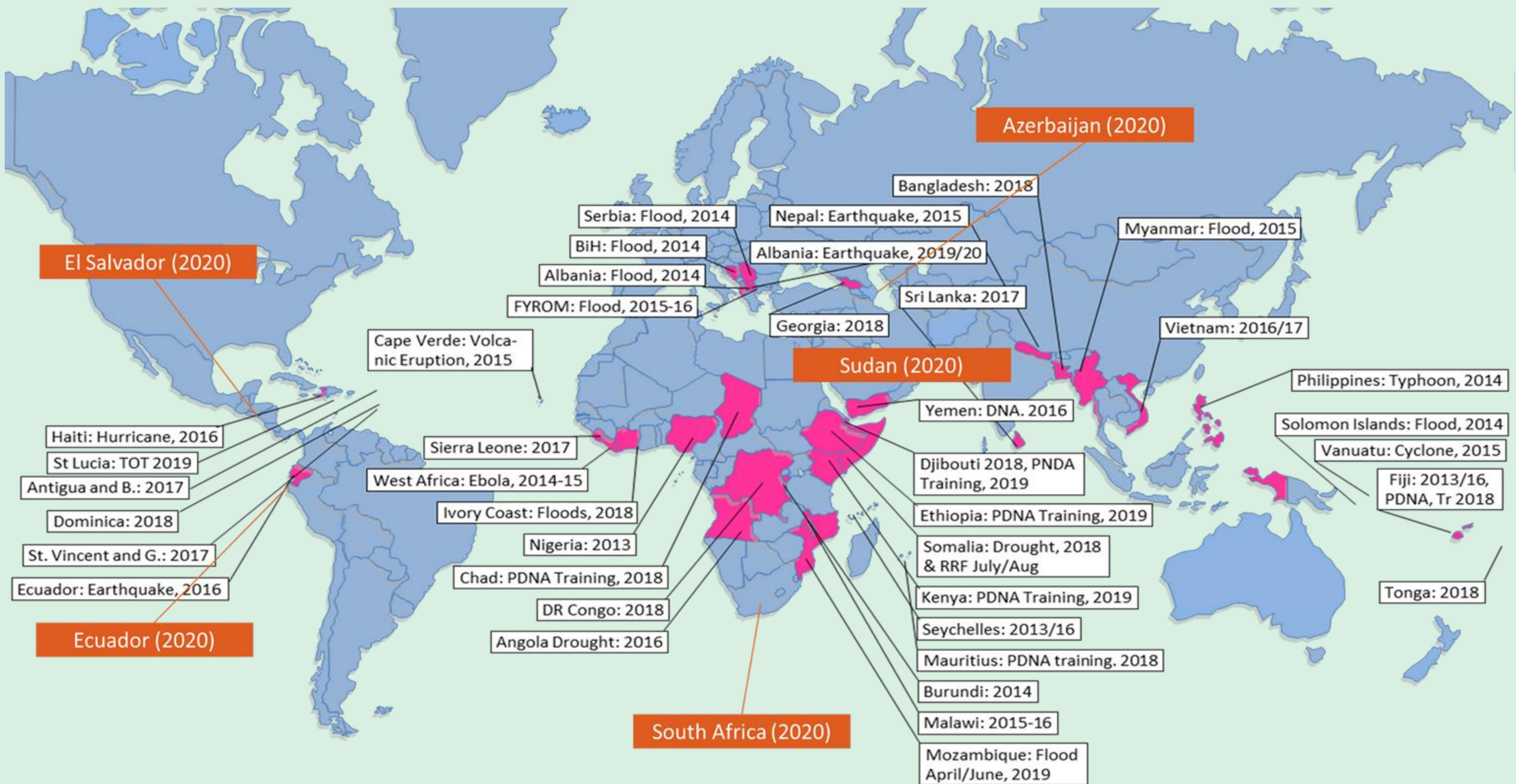


Basis for Mobilizing (Financial) Resources
through allocation of local, national and international sources.



Outline for Implementation Mechanism
led by the affected country for implementing the recovery strategy.





BUILDING ON WORLDWIDE APPLIED EXPERIENCE

Tools and Guidelines for PDNA

- Agreed protocols and methodology for the assessment: PDNA Vol. A
- 18 Sector-specific guidelines: PDNA Vol. B
- A Disaster Recovery Framework: DRF
- Training package
- Roster of experts for PDNA
- Online training in 4 languages- [LINK HERE](#)



Methodology, Sector Guides, Recovery Framework, Training Package, Case Studies, Ins. Arrangements for Recovery, Human Impact Assessment, Community Participation



PDNA GUIDELINES ARE BEING REVISED TO:



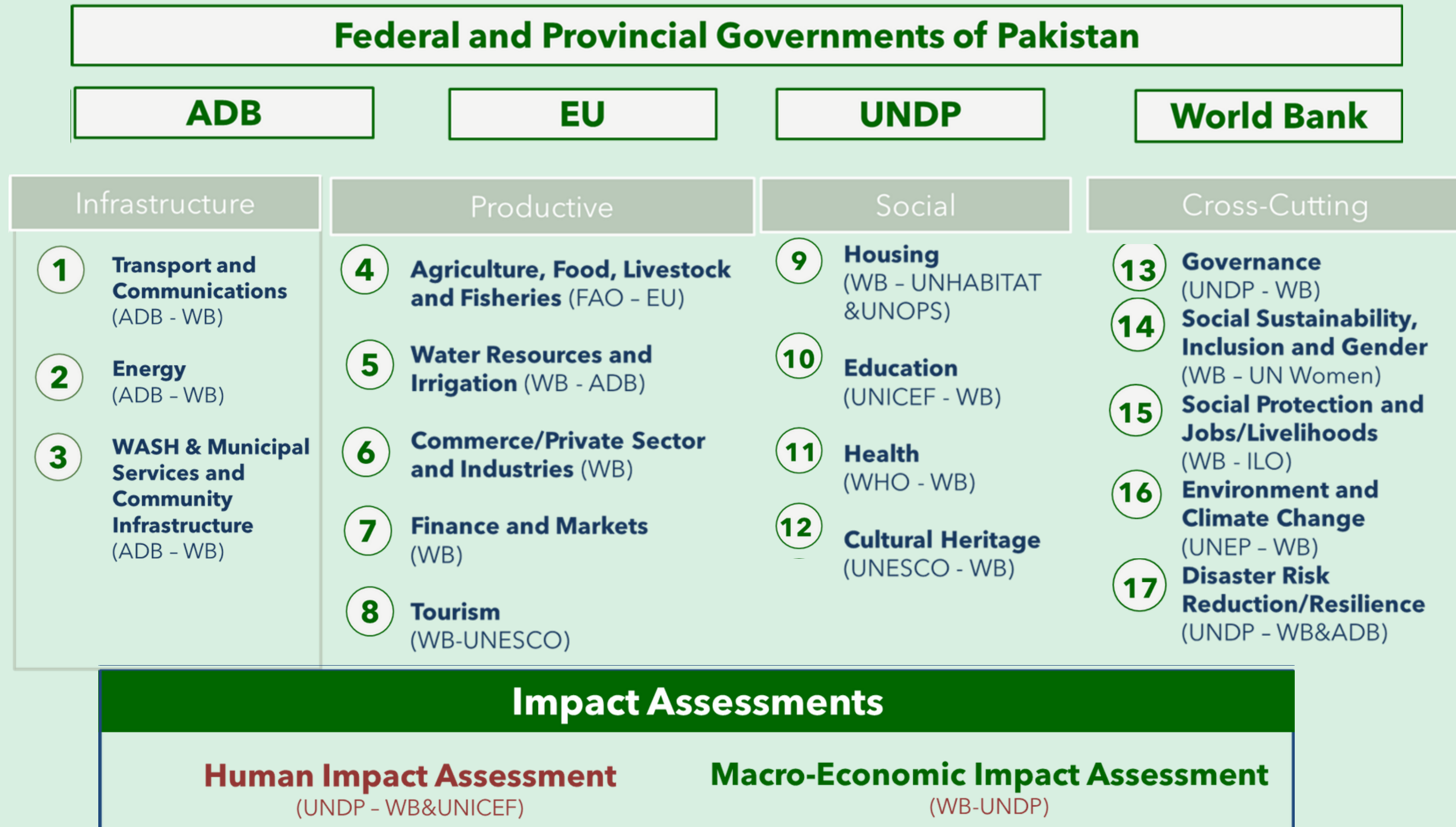
Address loss and damage
from climate hazards,
including Slow Onset Events
(SOEs) and Non-Economic
Losses (NELs)

Incorporate the use of more
up-to-date technologies to
collect baseline information
and assess losses and
impacts more effectively

Better assess
recovery in
contexts where
conflict, climate and
disaster risks
coexist

Better link with the
existing national
Loss and Damage
tracking system

Pakistan PDNA : 17 Sectors Included in the 2022 Floods



PAKISTAN PDNA

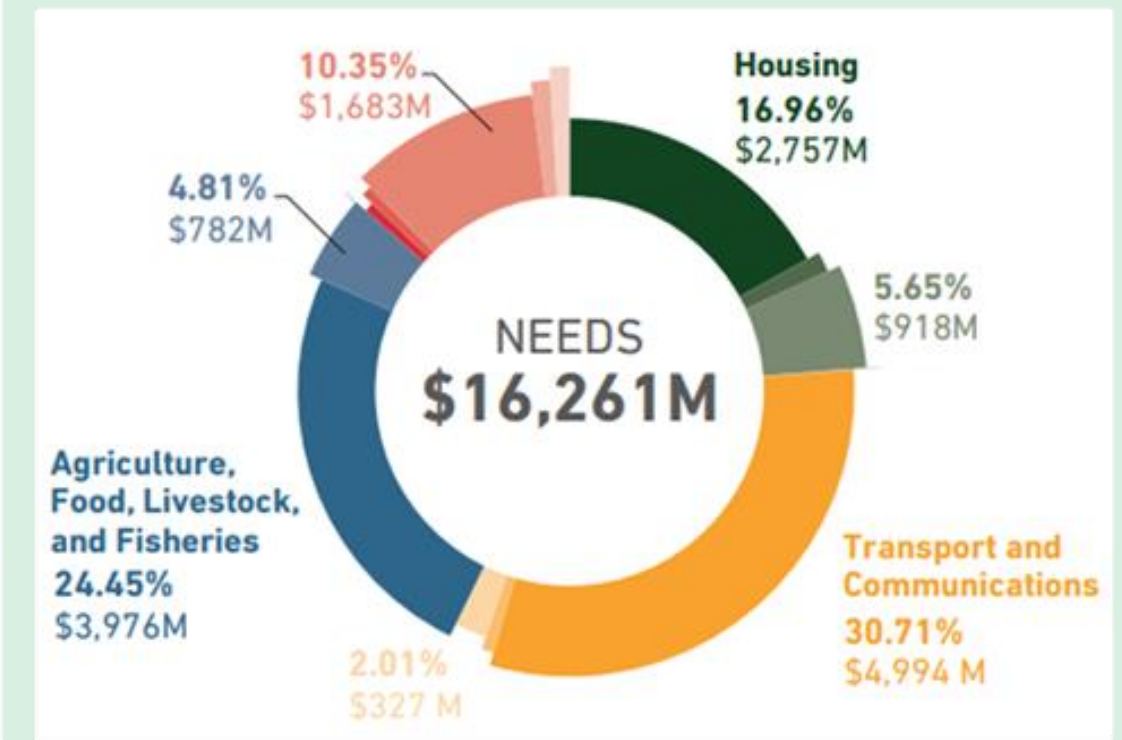
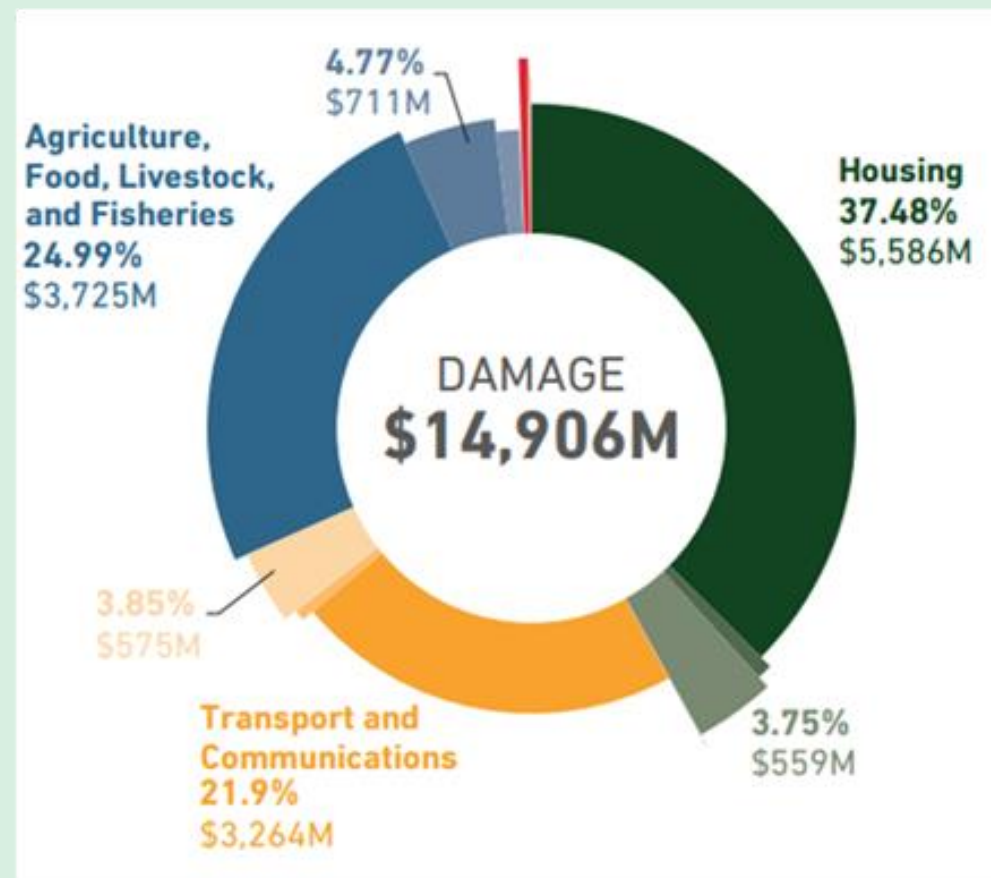


DAMAGE, LOSS, AND NEEDS BY SECTOR

Sectors	Damage		Loss		Needs	
	(Billion PKR)	(Million US\$)	(Billion PKR)	(Million US\$)	(Billion PKR)	(Million US\$)
Social Sectors	1,345	6,261	193	896	832	3,872
Housing	1,200	5,586	137	636	592	2,757
Health	23	109	7	34	40	188
Education	120	559	47	219	197	918
Culture and Heritage	1	6	1	7	2	9
Infrastructure Sectors	843	3,927	85	396	1,168	5,437
Transport and Communications	701	3,264	60	281	1,073	4,994
Energy	19	88	1	3	25	117
WASH, Municipal Services, and Community Infrastructure	123	575	24	112	70	327

PAKISTAN PDNA

DAMAGE: \$14.91 B -
LOSS: \$15.23 B -
NEEDS: \$16.26B



SOCIAL SECTORS

- Housing
- Health
- Education
- Culture and Heritage

INFRASTRUCTURE SECTORS

- Transport and Communications
- Energy
- WASH, Municipal Services, and Community Infrastructure

PRODUCTIVE SECTORS

- Agriculture, Food, Livestock, and Fisheries
- Water Resources and Irrigation
- Commerce and Industries
- Finance and Markets
- Tourism

CROSS-CUTTING SECTORS

- Governance
- Social Sustainability, Inclusion and Gender
- Social Protection, Livelihoods, and Jobs
- Environment and Climate Change
- Disaster Risk Reduction and Resilience

PAKISTAN PDNA



DAMAGE, LOSS AND NEEDS BY REGION

Damage			Loss		Needs	
Region	(Billion PKR)	(Million US\$)	(Billion PKR)	(Million US\$)	(Billion PKR)	(Million US\$)
Balochistan	349	1,625	541	2,516	491	2,286
Khyber Pakhtunkhwa	201	935	141	658	168	780
Punjab	111	515	122	566	160	746
Sindh	1,948	9,068	2,444	11,376	1,688	7,860
Cross-Provincial ¹²	587	2,731	14	67	975	4,540
Special Regions ¹³	7	32	11	49	10	48
Grand Total	3,202	14,906	3,272	15,233	3,493	16,261

Application in different contexts

Ukraine, Pandemic



PAKISTAN

2022 POST DISASTER NEEDS ASSESSMENT

(PDNA)



COVID-19 Recovery Needs Assessment (CRNA):

Key Features



Socio-economic assessment tool adapted from UN, WB, EU developed methodology for joint assessment and planning after a crisis (PDNA)

Identifies economic and social effects and impacts, estimates resilient recovery needs, and helps develop comprehensive recovery strategy

Flexible tool (scope/timing) to assist Governments identify socio-economic challenges presented by COVID-19

PDNA vs CRNA Focus

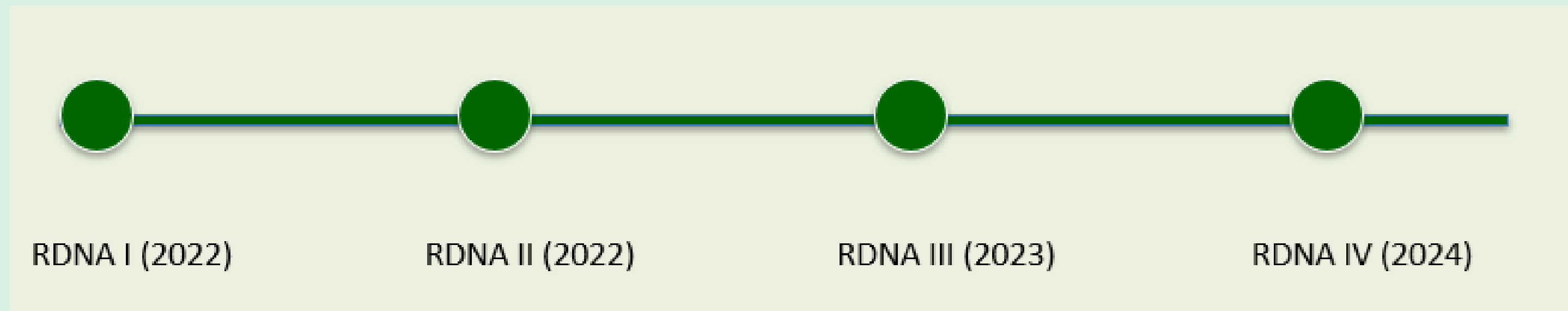


PDNA	CRNA
Rapid-onset events	Slow-onset & health-related events
Assessment of the effects during a defined short-time frame	Duration of effects linked to the event's evolution (e.g., pandemic contagion curve)
Bias towards damages	Focus mainly on losses and on social & economic costs
Damage assessment of infrastructure	No damage assessment (no direct impacts)

CRNA: Key considerations

- **Define the scope of the assessment clearly:** As the pandemic is ongoing, the analysis must set a specific timeframe to assess its effects and impacts.
- **Recovery pathways are influenced by context:** pre-existing trends and the capacity to respond shape the recovery options
- **Recovery proposals or guidelines:** Must be framed within a for recovery limited time horizon of the assessment, acknowledging that results reflect only a defined period

Ukraine RDNA



- **Four iterations of RDNA:** reflect evolving conflict dynamics and geographical scope and each round provided an updated picture of recovery and reconstruction needs
- **Application in conflict/war context:** First large-scale use in active war setting; adapts PDNA principle to prolonged conflict setting
- **Integrates physical destruction** with **displacement, livelihoods, governance, social impacts** with a strong component of **conflict sensitivity**
- **Tracks cumulative damages and losses** across sectors
- Provides evidence base for **recovery financing** and **government planning**
- Supports **government-led coordination** with international partners

Thank you for your attention

Contacts:

Rita Missal

rita.missal@undp.org

Joana Sampainho

joana.sampainho@undp.org

